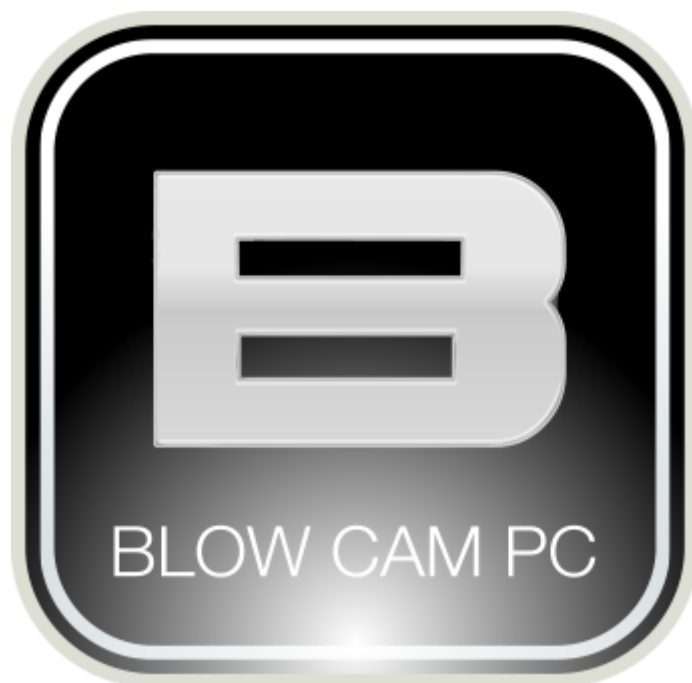


BLOW

USER MANUAL SOFTWARE BLOW CAM-PC

(Version : English Ver2.0)



1	System Overview	2
2	version upgrade information.....	2
3	Software operating environment.....	2
4	Software installation and uninstall	2
	4.1 Installation.....	2
	4.2 uninstall	2
5	Software application	2
	5.1 User login.....	2
	5.2 Software main interface.....	3
	5.3 System function bar	4
	5.3.1 Preview	4
	5.3.2 Setup.....	6
	5.3.3 Local player.....	14
	5.4 Add camera	16
	5.5 Device info.....	17
	5.6 Control adjustment and image management	24
	5.7 Preview interface.....	25
	5.8 Basic Information.....	26
	5.9 About Network Video Surveillance Software	26

1 System Overview

BLOW CAM-PC Network Video monitoring system is based on network monitoring as the core, based on IP network transmission of multimedia digital information to provide a centralized management and control system.

The system uses modular, plug-in technology, preview screen segmentation, alarm linkage, to achieve intelligent digital, network monitoring.

2 version upgrade information

Download the software from <http://prolech.com.pl> and choice yours model camera, it is the latest version after you've done.

3 Software operating environment

Hardware environment

CPU	Intel P4dual core 2.4GHz above
RAM	DDR3 1G, 2G memory
HDD	500G
Graphics card	1PCS,Requires the resolution of 1024 * 768 and above
Monitor	1PCS
Sound card	1PCS
NIC	1PCS,Ethernet 100M / 1000M
Keyboard	1PCS
Mouse	1PCS

Software Environment

OS	XP/win7/win8/win9/win10
----	-------------------------

4 Software installation and uninstall

4.1 Installation

Please download from <http://www.prolech.com.pl> ,if the file your downloaded is BLOW CAM-PC.exe,double click and set up according with the hint.

4.2 uninstall

Click "Start", next "Control Panel" and "Uninstall a programs" on the list find the corresponding software to uninstall.

5 Software application

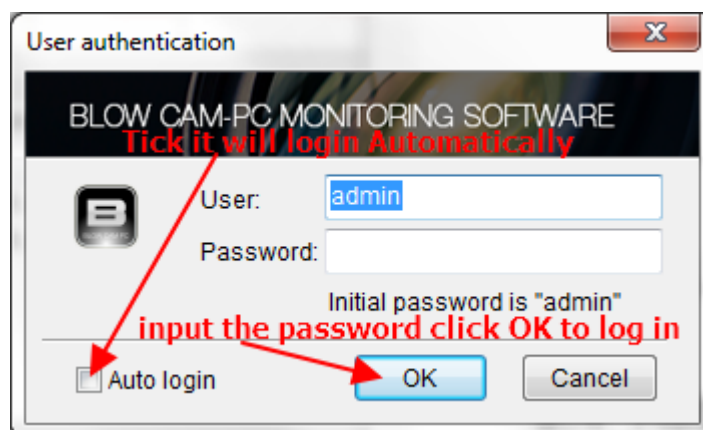
5.1 User login

Running software to log in picture 5-1-1,input default user is admin,password is

USER MANUAL SOFTWARE BLOW CAM-PC

admin and tick the auto login and OK to enter.

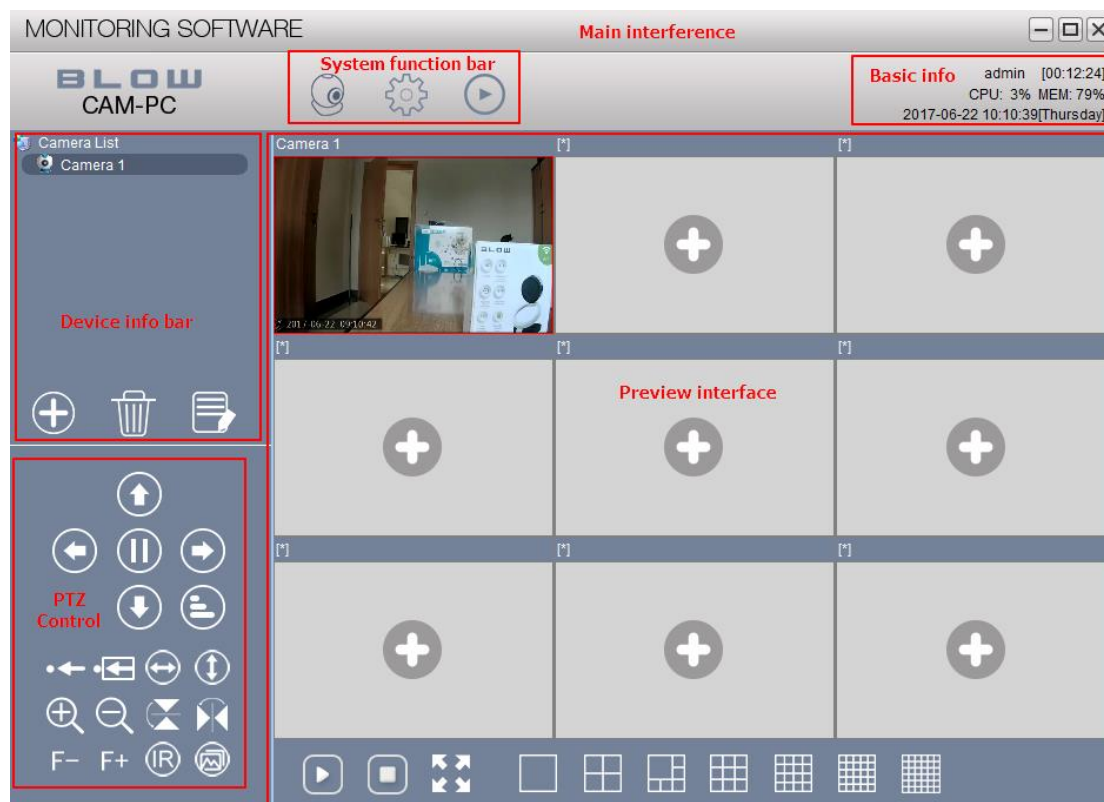
Tick "Auto login" the software will automatically login next time;



(Figure 5-1-1)

5.2 Software main interface

Log in the main interface as below 5-2-1:



(Figure 5-2-1)

- System function bar: Key feature button
- Device info bar: Show the basic info of additive device
- PTZ control: The PTZ camera can be controlled
- Preview interface: Real-time preview of camera video
- Basic info: Display the date, CPU usage, memory usage and other basic information

5.3 System function bar


The system function bar contains preview, setup and local player, as shown in Figure 5-3-1

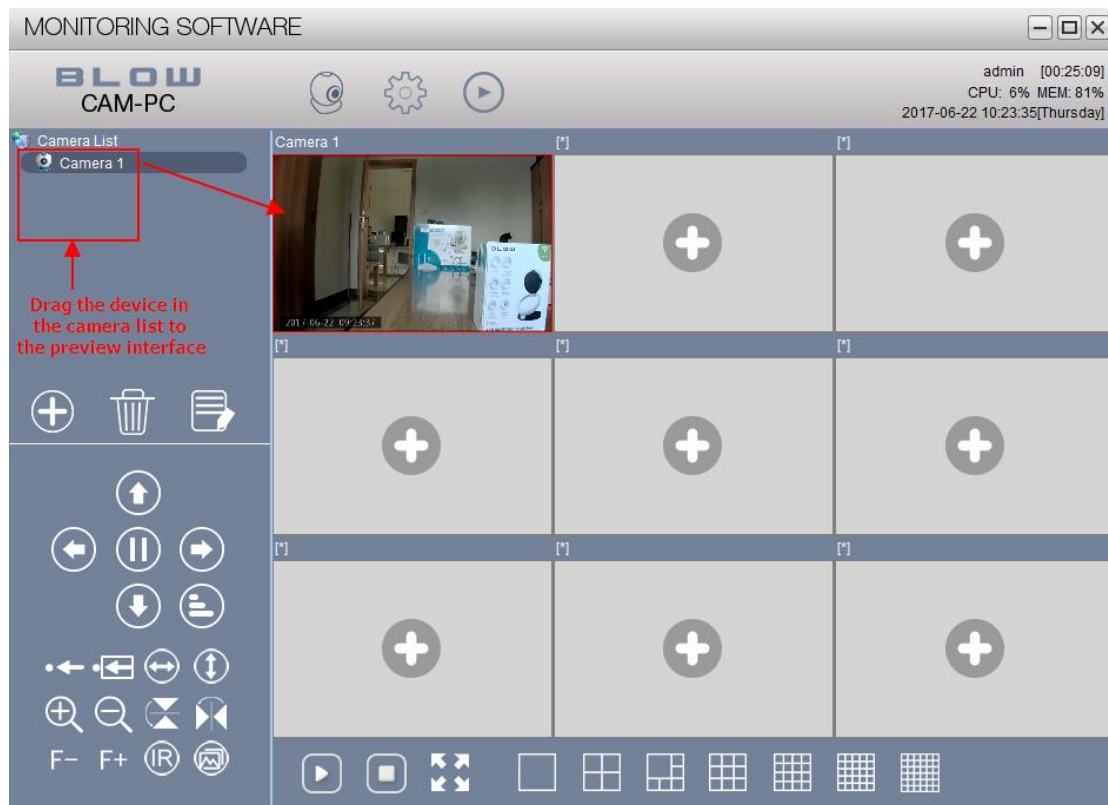


(Figure 5-3-1)

Click on a different button can be done the corresponding operation to achieve the appropriate function.


5.3.1 Preview







Click  button Will switch to the preview screen which is the main interface, as shown below;



(Figure 5-3-1-1)

The main operation


1. Open the image: Drag the device in the camera list to the preview screen;
2. Shortcut Bar: as figure , Select a frame (the frame's border turns red), Move the mouse to this screen, the bottom of the screen will automatically emerge out of this toolbar, the main functions are:

- (1) Video: Click , The video of this screen is recorded
- (2) Capture image: Click , Capture the current image and save the snapshot
- (3) Start voice: Click , Intercom between the camera and the device such as cellphone or PC
- (4) Audio: Click , Monitor the camera;
- (5) Modify camera: Click , Modify the camera parameters
- (6) Shut: Click , Close the current image;


3.Right-click the toolbar: Right-click on the image will appear as a toolbar 5-3-1-2

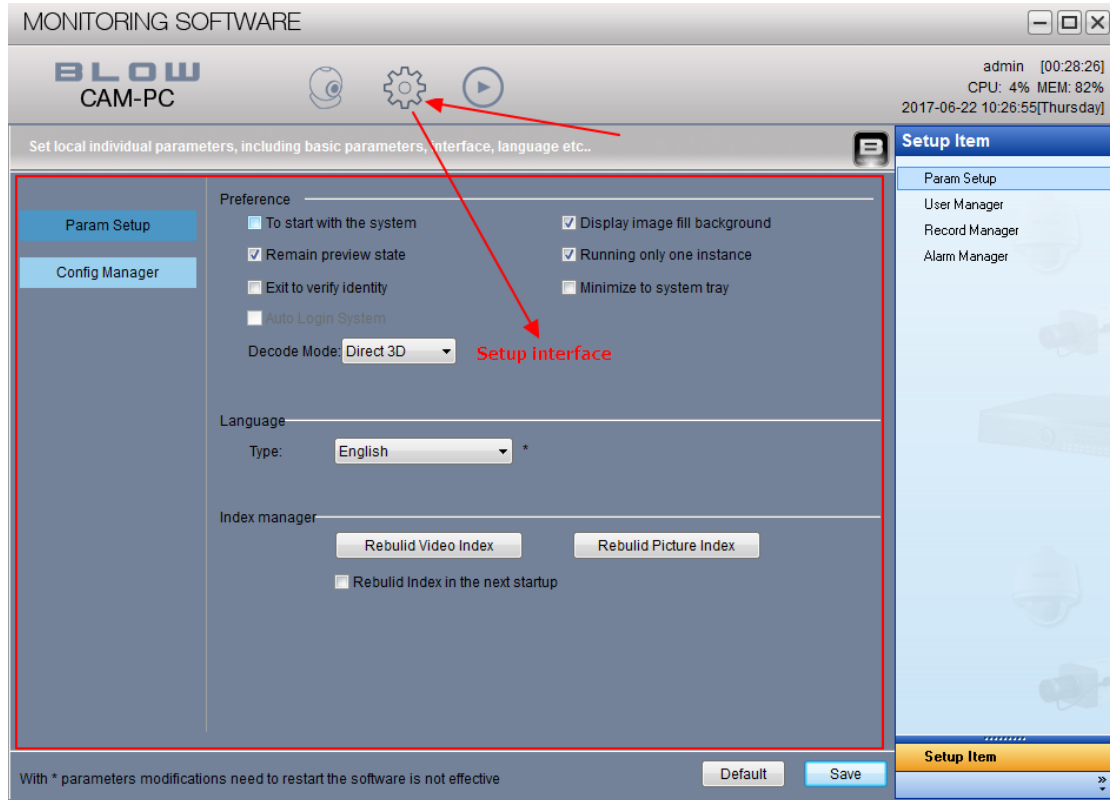


(Figure 5-3-1-2)

- (1) Audio: The same as "Audio" function in the shortcut toolbar;
- (2) Capture Image: The same as "Snapshot" in the shortcut toolbar
- (3) Record : Same function as "Record" in the shortcut toolbar
- (4) Full-screen display: Full-screen display the preview screen, hidden border
- (6) Start voice: the same as "Audio" in the shortcut toolbar
- (7) Part Zoom: Use the mouse in the screen frame selection area, the selected area to be enlarged;
- (8) Close the current preview: the same as the "shut" function in the shortcut bar
- (9) Close all preview: Click  button, Close all open images on the current preview interface;

5.3.2 Setup

After entering the system to add equipment, video settings, alarm settings and other operations, Click  button, Enter the setup interface, as shown in Figure 5-3-2-1:

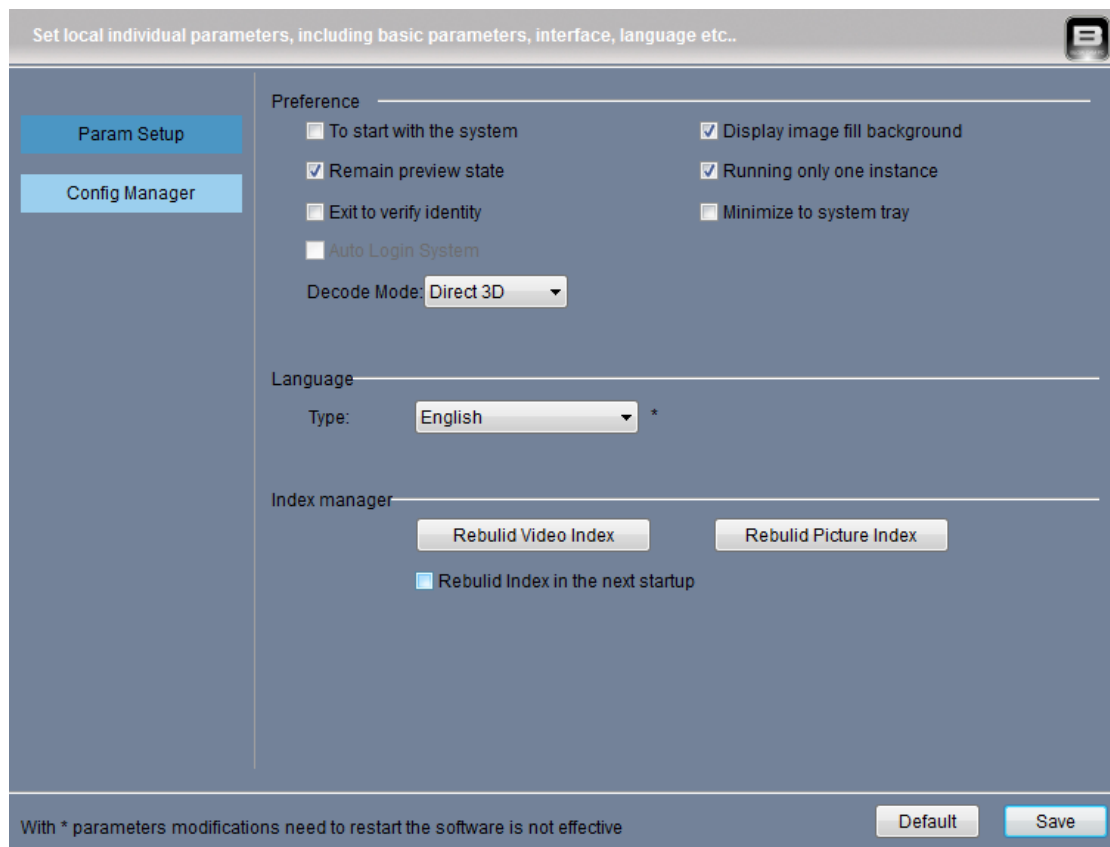


(Figure 5-3-2-1)

Main settings:

1.Parameter settings

A. Parameter settings, as shown in Figure 5-3-2-1-1



(Figure 5-3-2-1-1)

(1) Param Setup:

- To start with the system;
- Display image fill background
- Remain Preview state
- Running only one instance
- Exit to verify identity
- Minimize to system tray
- Auto Login System

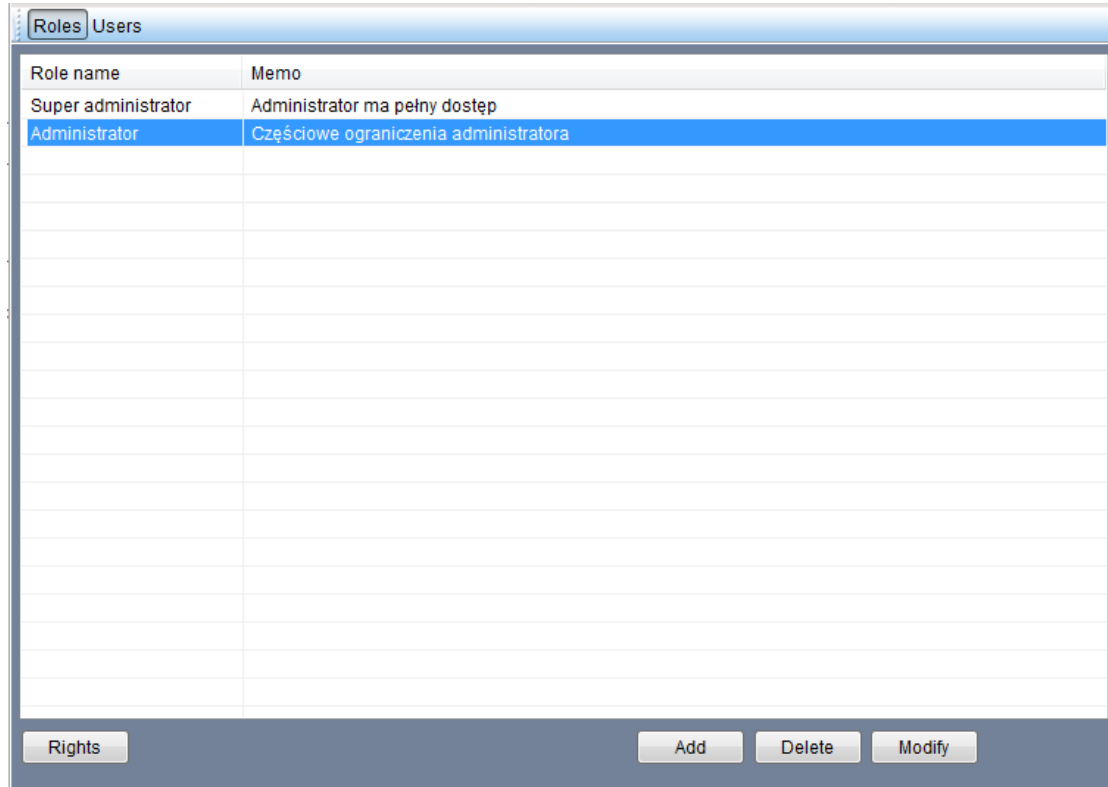
(2) Language:

Type: English, Italy, Polish, Simplified Chinese, Traditional Chinese. The default is the language selected when the program is installed, also you can choose the language here.

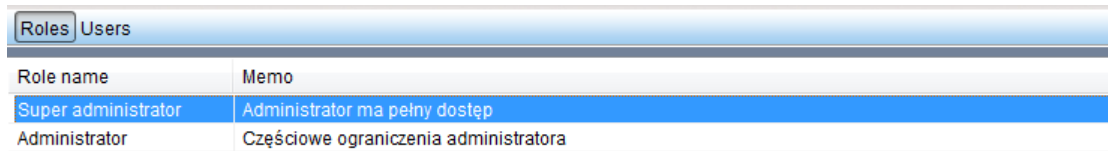
(4) Index manager:

- Rebuild Video Index: Click this button to re-index the video file
- Rebuild Picture Index: Click this button to re-index the snapshot
- Rebuild Index in the next startup: Tick it will be rebuild automatically

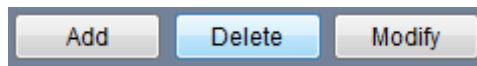
2.User Manger, as shown in Figure 5-3-2-2



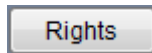
(Figure 5-3-2-2)



(Figure 5-3-2-2a)



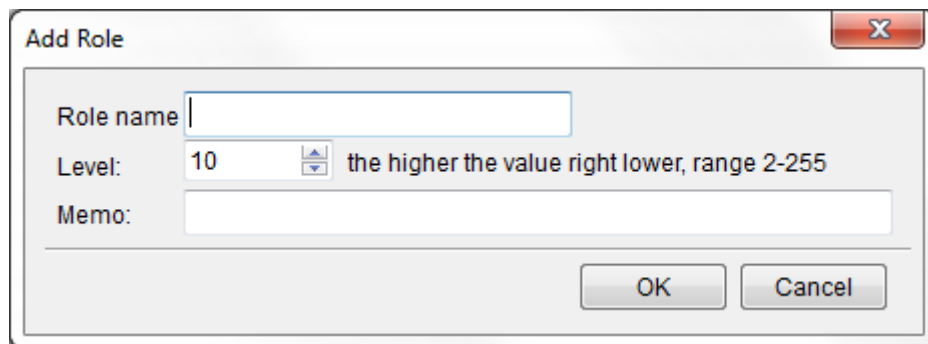
(Figure 5-3-2-2b)



(Figure 5-3-2-2c)

A. Roles:

- (1) Add: Click "Add" button, pop up as (figure 5-3-2-3)



(Figure 5-3-2-3)

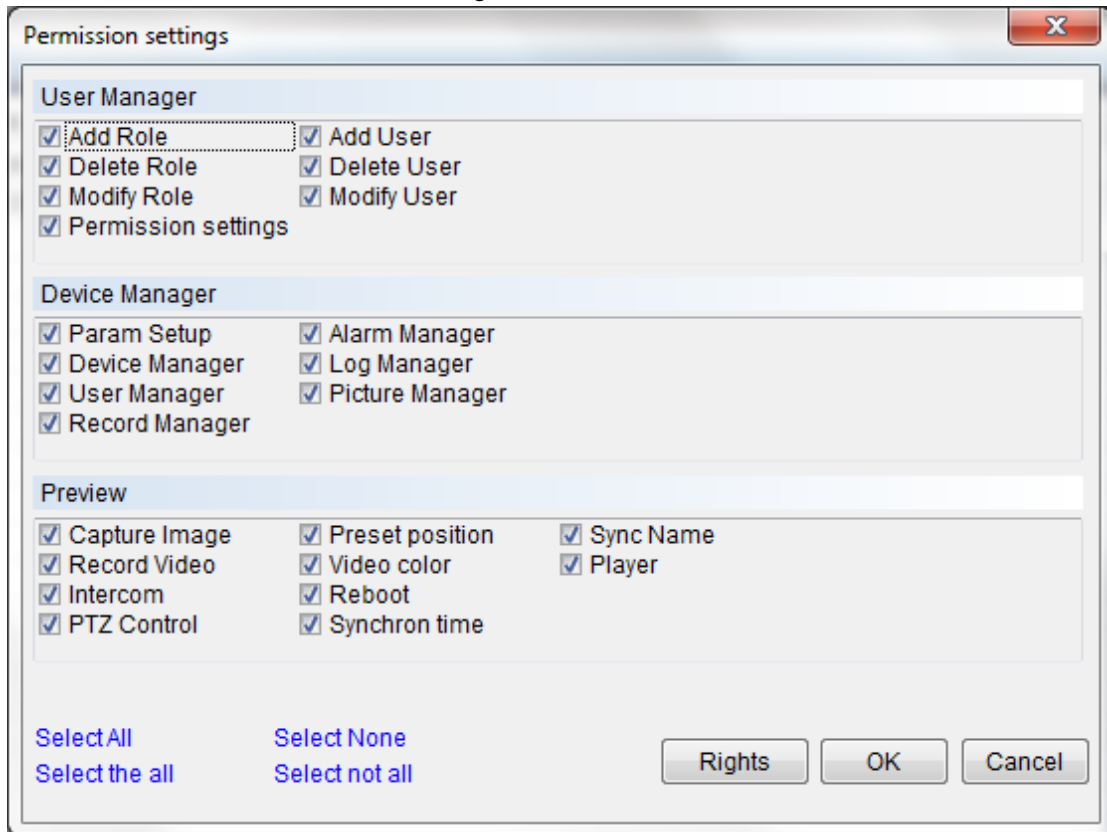
USER MANUAL SOFTWARE BLOW CAM-PC

Input role name, Set the level (the higher the value the lower the right, the range is 2 to 255), a simple description of the added role permissions;

(2) Delete: Select the role to a role, click the "Delete" button, pop-up prompt box, "OK" to delete the role, "Cancel" exit; (Super administrator can not be deleted)

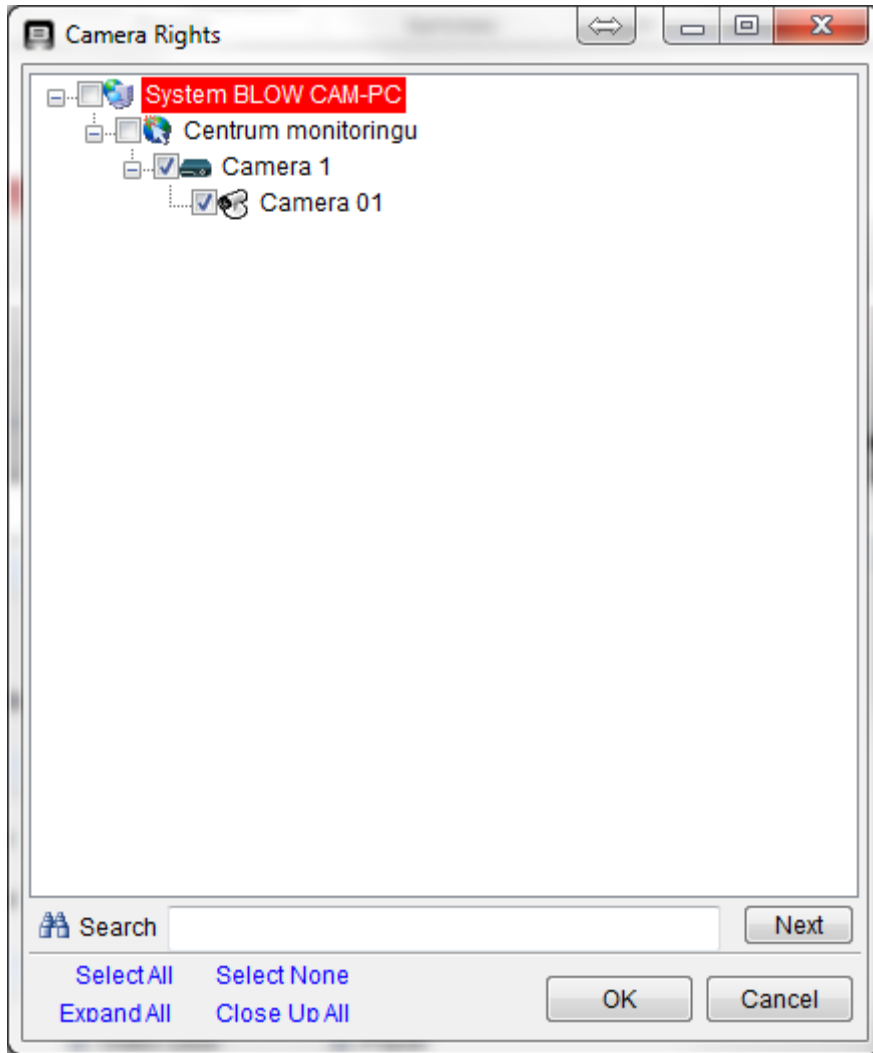
(3) Modify: Select a role, click "modify", "role", "level", "description" to modify, pop-up prompt box, "OK" to save changes, "cancel" exit

(4) Rights: Select a role, the pop-up permission window (Figure 5-3-2-4), the current selected role permissions set, the role of open permissions, in front of the box marked with checkmark, click "OK" to save the settings, Click Cancel to exit



(Figure 5-3-2-4)

- Select All: All permissions in the same module are open to the role
- Select None: All permissions in the same module are not open to that role
- Select the all: All permissions in the module are open to the role
- Select not all: All permissions in all modules are not open to this role
- Right: (Figure 5-3-2-5), tick the front box , then the device is open to the user, otherwise not open, click "OK" to save the settings, "cancel " is to exit operation;
- Search:"Search" in the camera rights can be manually entered, directly find the target device, and set the camera permissions



(Figure 5-3-2-5)

B. User:

(1) Add: Click "Add" button, pop-up (Figure 5-3-2-6), Fill in the window with the appropriate data, click "OK" to save

The image shows a dialog box titled "Add User" with a close button (X) in the top right corner. The dialog contains five input fields: "User name:" (a text box), "Role:" (a dropdown menu with "Administrator" selected), "Level:" (a dropdown menu with "2" selected), "Password:" (a text box), and "Confirm Pass:" (a text box). At the bottom of the dialog are "OK" and "Cancel" buttons.

(Figure 5-3-2-6)

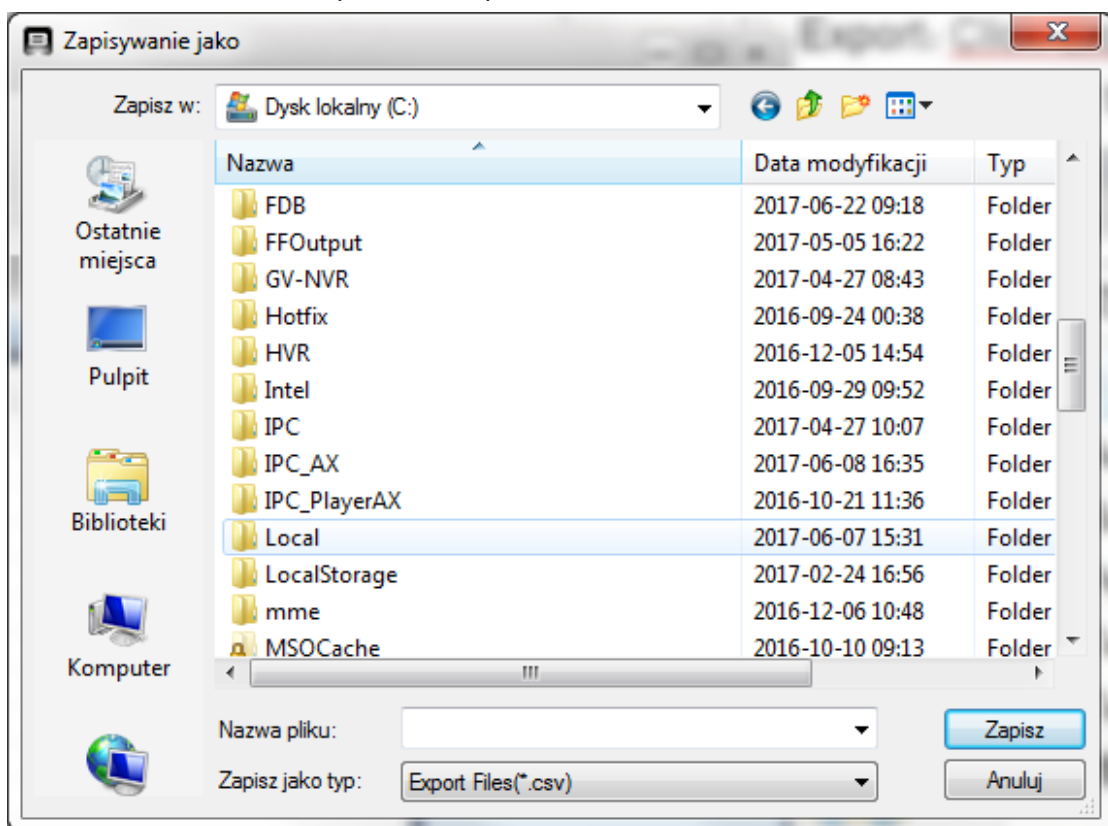
USER MANUAL SOFTWARE BLOW CAM-PC

- User name: Enter the user's name (like: user 1) ;
- Role: Select a role in the drop-down box (like: Administrator) ;
- Level: The level is automatically determined when the role is selected
- Password: Enter a password (the system automatically displays the symbol "**")
- Confirm Password: Re-enter the password to confirm (the system automatically displays the symbol "**")

(2) Delete: Select a user, click the "Delete" button, "OK" to delete the user, "Cancel" to exit the operation;

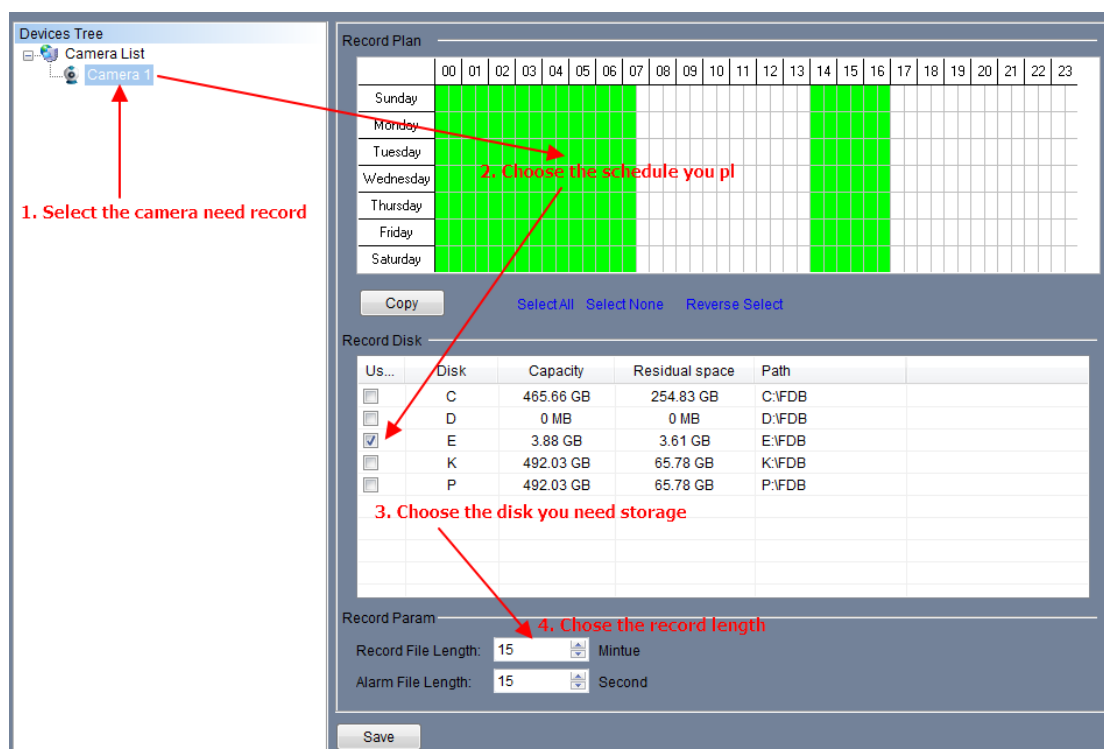
(3) Modify: Select a user, click the "modify" button, pop-up the same window as Figure 5-3-2-15(the info is the same as the user data), modify the info, click "OK" to complete the modification

(4) Export: Click "Export", pop-up (Figure 5-3-2-7), fill in the "file name" of the existing user to excel file format to export to the specified location.



(Figure 5-3-2-7)

3.Record manager as shown in Figure 5-3-3-1



(Figure 5-3-3-1)

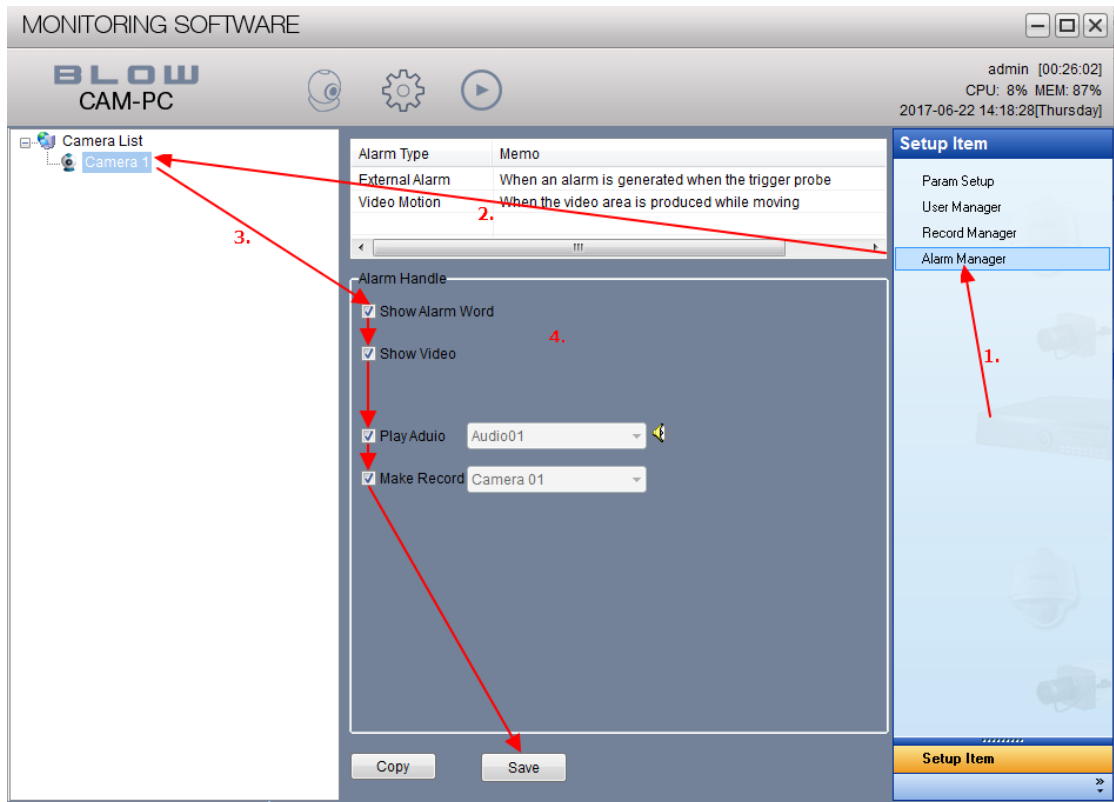
(1) Select the device to be set in the Device Tree, and then select the time period to be recorded in the Recording Plan (green is the time period of recording, each small box represents half an hour). In the Recording Position "In the check box to save the file location, in the" video parameters "set the video file length and alarm recording time, and finally click Save.

(2) If you have multiple devices with the same recording settings, you can select the "Copy" function

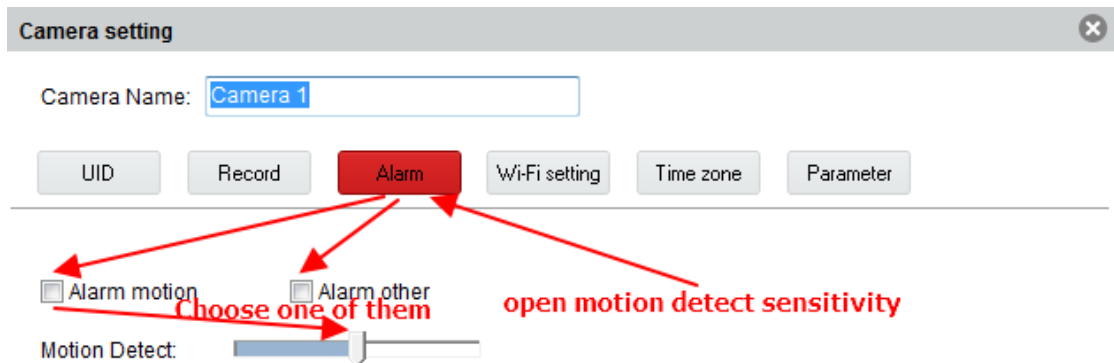
(3) Select a device, click "Copy" button, in the pop-up menu, select the device you want to set, click "OK" to confirm, and then click "Save."

4. Alarm Manager

Alarm Manager is only for the computer software to trigger the alarm, (Figure 5-3-4-1) first you need to open the motion detection sensitivity and alarm type (Figure 5-3-4-2)





(Figure 5-3-4-1)



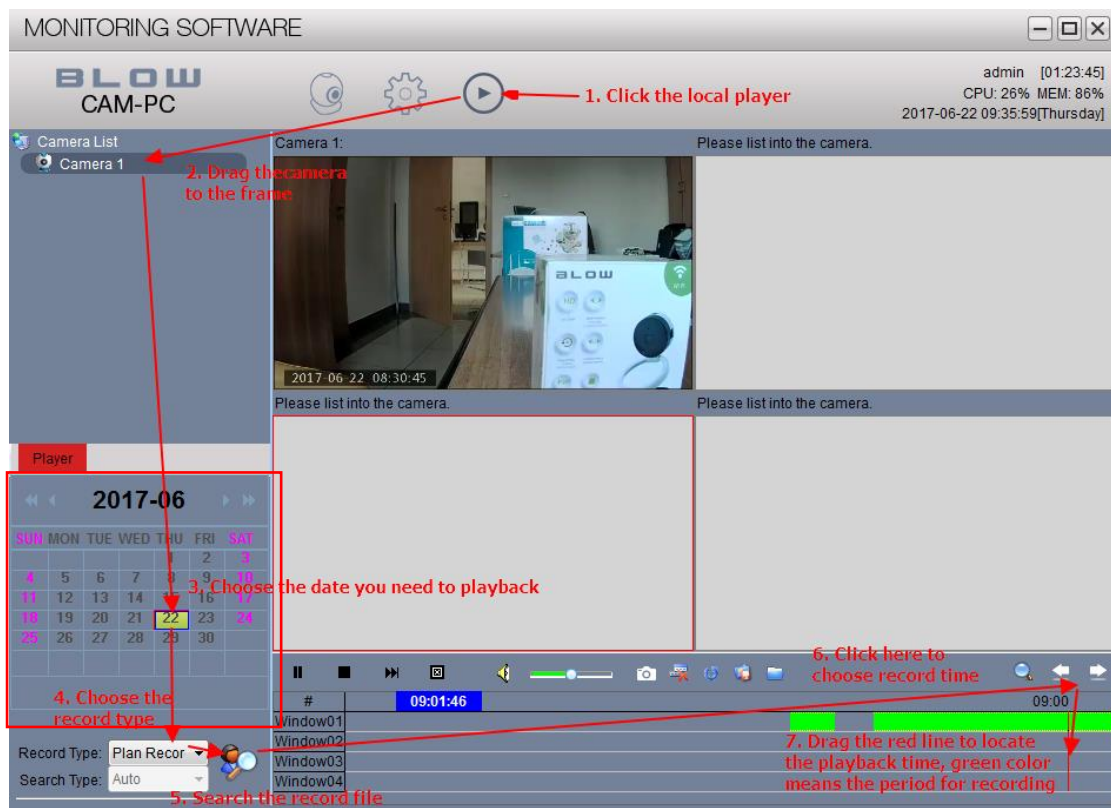
(Figure 5-3-4-2)

5.3.3 Local player

When to record playback, click “local player”  , Enter the video playback interface shown in Figure 5-3-3-1, Drag the camera to play back from the list to the right window (Supports 1 to 4 cameras at the same time) , select the time to record the file in

the time list, Select the type of record, click “search files”  , the time period for recording will be displayed on the right (If there is recording in this time period, there is a green progress bar) ; Drag the red bar to start playback the video, and locate the playback time.

Double-click the image to zoom between the original and the present screen size.














(Figure 5-3-3-1)

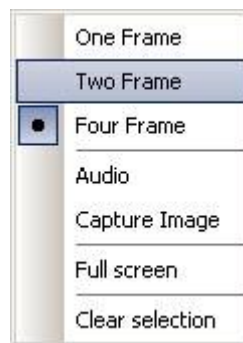
Player control:



(Figure 5-3-3-2)

	Play / Pause		Stop the selected playback screen
	Play the next file		Stop all playback screen
	Sound, click mute		Sound size adjustment
	Capture image		Clear the selected camera
	Synchronization time		Backup
	Open the file		

Player right-click menu bar:



(Figure 5-3-3-3)

One Frame 1: The playback screen will have only one;

Two Frame 2: The playback screen is displayed in two screens;


Four Frame4: The playback screen is displayed in four frames;


Audio: Open the audio;

Capture Image: Grab the current playback of the image;

Full screen: The playback screen is displayed in full screen

Clear selection: Clear the files in the list of selected devices and files on the player and close the image.

Scaling: Click , can zoom in and out on the time scale, make the video playback more accurate positioning

Click the button  move the time bar will scaling the scale

Video playback to achieve:


1. Click the "local playback" button, the software into the playback interface
2. Drag the device that need to play back to the screen on the right (support 1-4 frame) ;
3. In "Search files", select the date to be played back, the record type, and the search type,click"Search files",The requested file will be retrieved and in the right side of the list with green or blue stripes displayed in chronological order,green means timed recording, blue means motion detection alarm recording, no recording will still

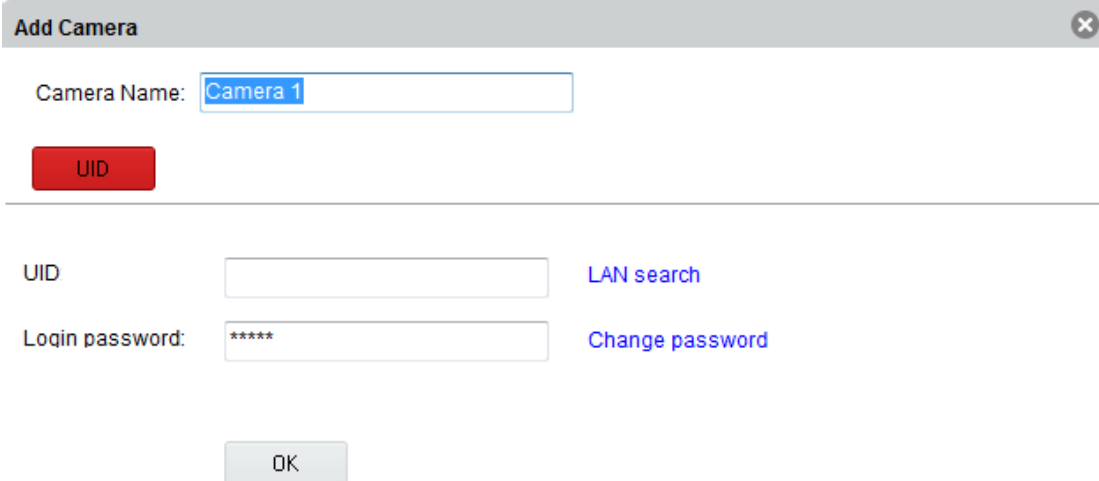
be default color

4. Drag the progress controller (the red vertical bar in the list) to the time period that need to play back,the frame will open the corresponding picture.If need more precise positioning time can select the approximate time, and then click the "scaling" button so as to achieve the purpose of more positioning by enlarge the cell, so as to achieve the purpose of more positioning;

5. Through the buttons in the player control bar can control the playback pause / play, stop, the next, stop all, sound size adjustment, capture, clear selection, synchronization time, backup.

5.4 Add camera

1. Click "Add camera" , can search and add camera,As shown in Figure 5-4-1,Right-click the Add camera under the Camera List, also can open a menu bar, the same as shown in Figure 5-4-1



(Figure 5-4-1)

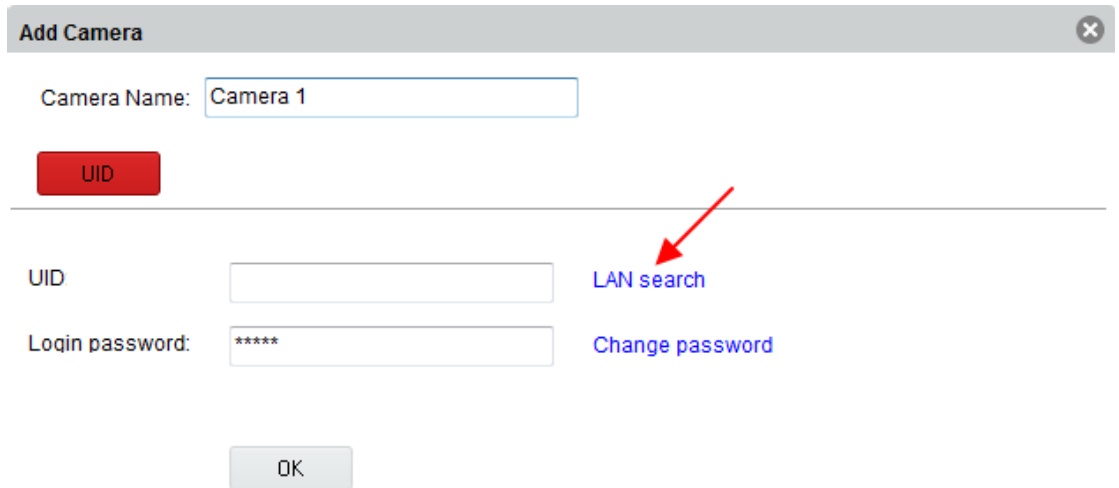
(1) Set camera name:

Camera Name:

(2) Add external network device: Enter the external camera "UID", "enter the login password", click "OK"

UID

- (3) Add LAN device: Click "LAN search", click "OK"



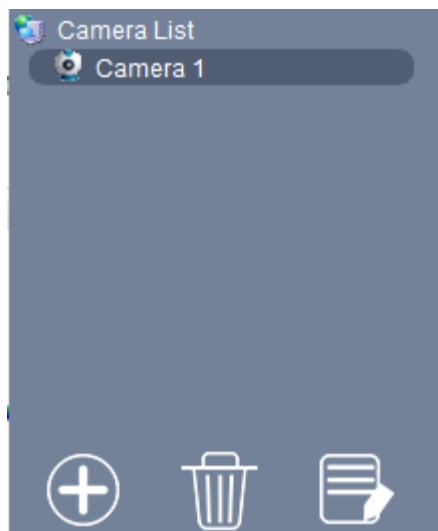
Click Add in the preview screen, as shown in figure 5-3-5-1, it is the same as add camera.



(Figure 5-4-1-1)

5.5 Device info

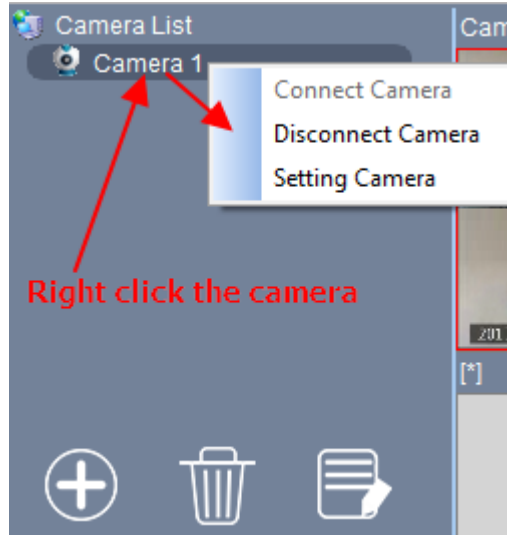
1. Camera List: Show the added device (Figure 5-5-1)



(Figure 5-5-1)

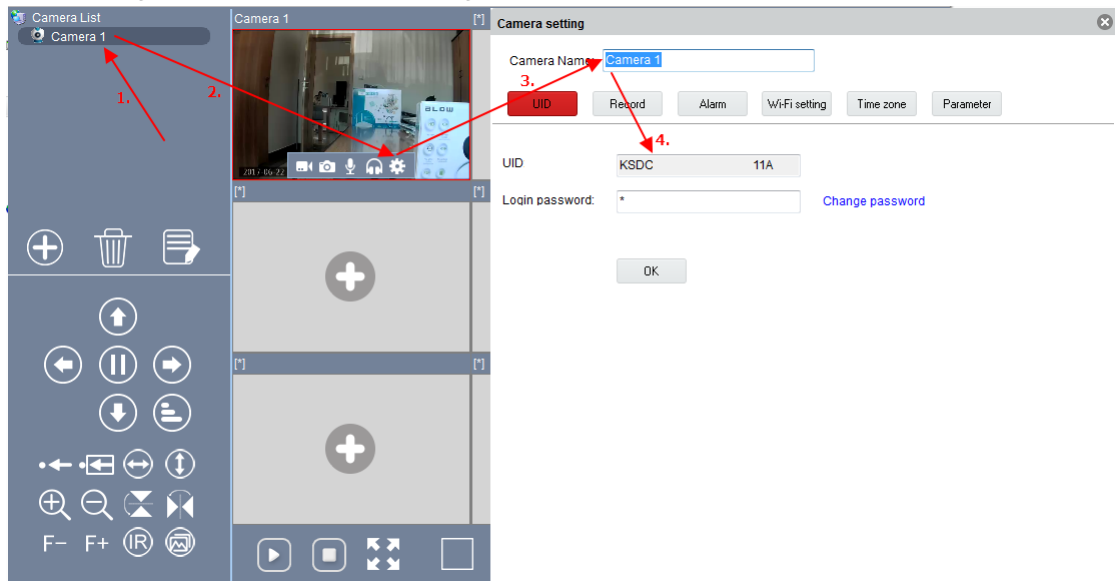
USER MANUAL SOFTWARE BLOW CAM-PC

Right-click the camera can open a menu bar, as shown in Figure 5-5-1-1



(Figure 5-5-1-1)

- Connect camera: Client software and camera connection, real-time monitoring
- Disconnect camera: Disconnect the client software and the camera , turn off the real-time monitoring screen
- Setting camera: As shown in Figure 5-5-1-2;



(Figure 5-5-1-2)



: Add camera;

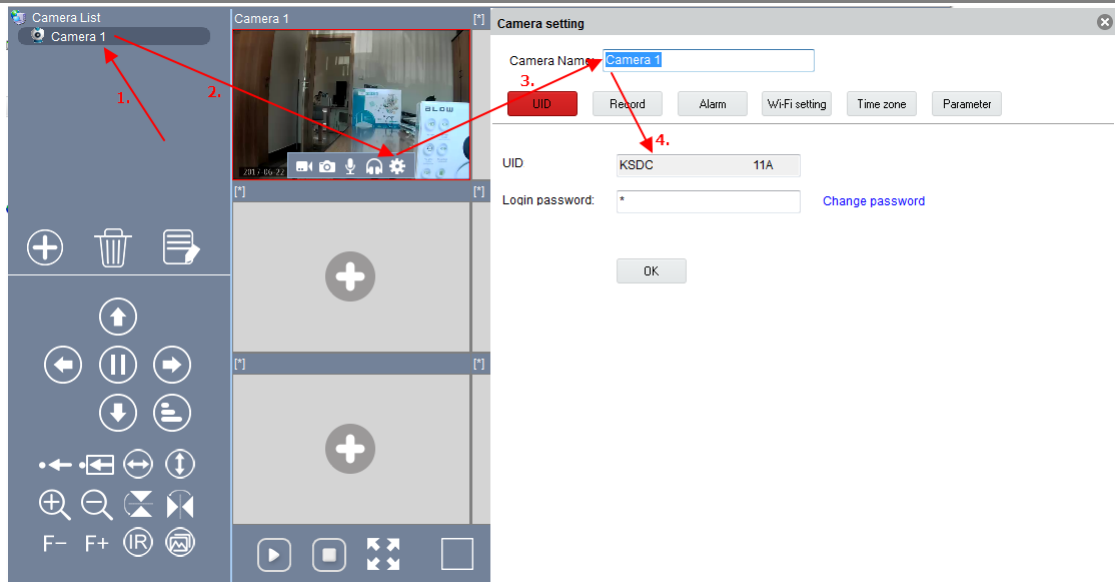


: Delete camera;



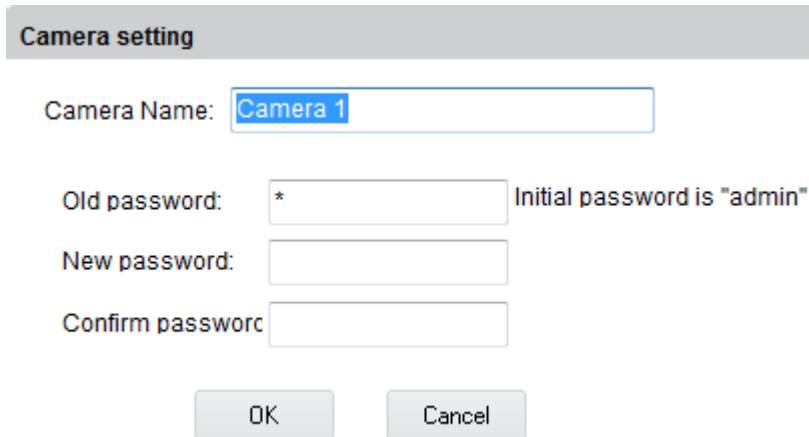
: Modify camera; as shown (Figure 5-5-1-3)

USER MANUAL SOFTWARE BLOW CAM-PC



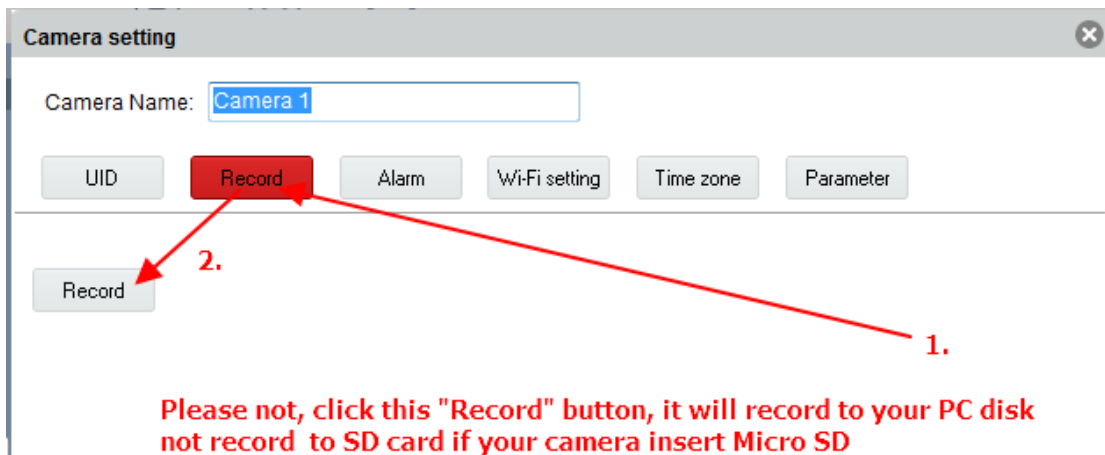
(Figure 5-5-1-3)

A:Camera name and login password;as shown (Figure 5-5-1-4)



(Figure 5-5-1-4)

B:Record

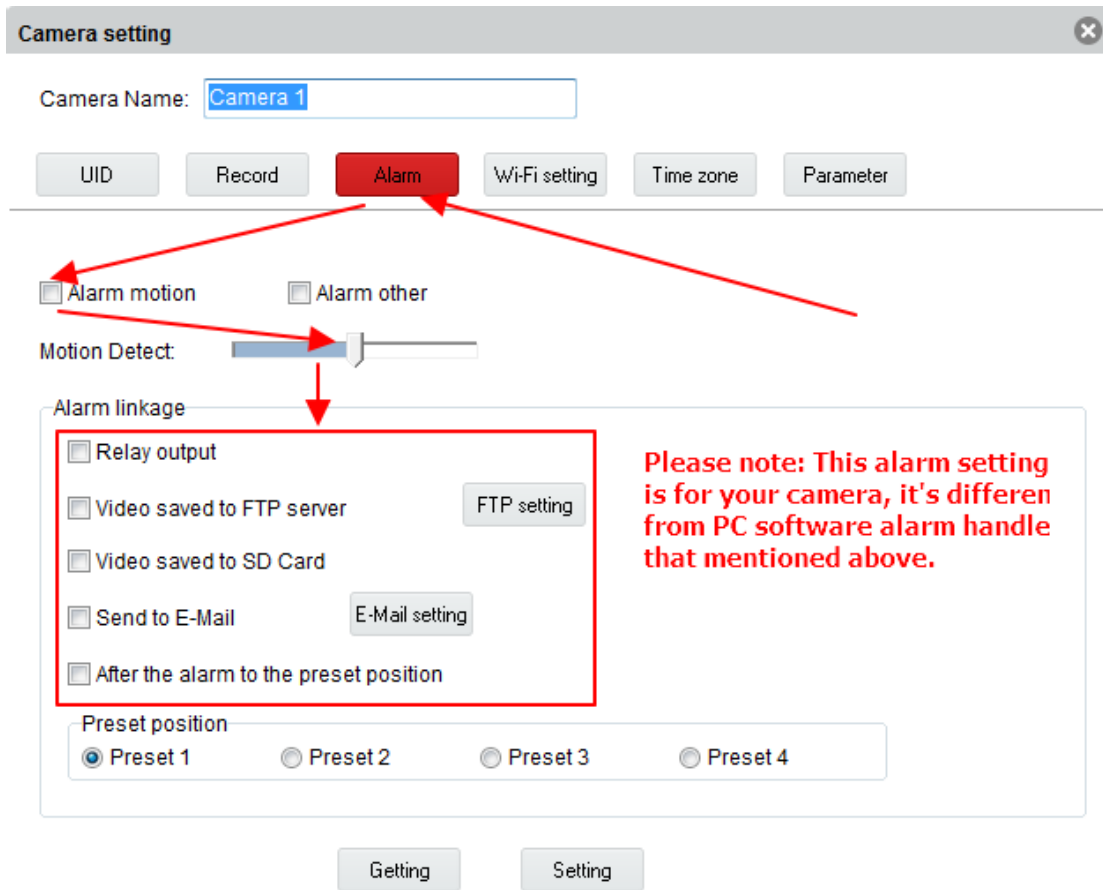


(Figure 5-5-1-5)

Click the "Record" button to enter the recording configuration page, the same as the record management, see section 5.3.2,Figure 5-3-3-1

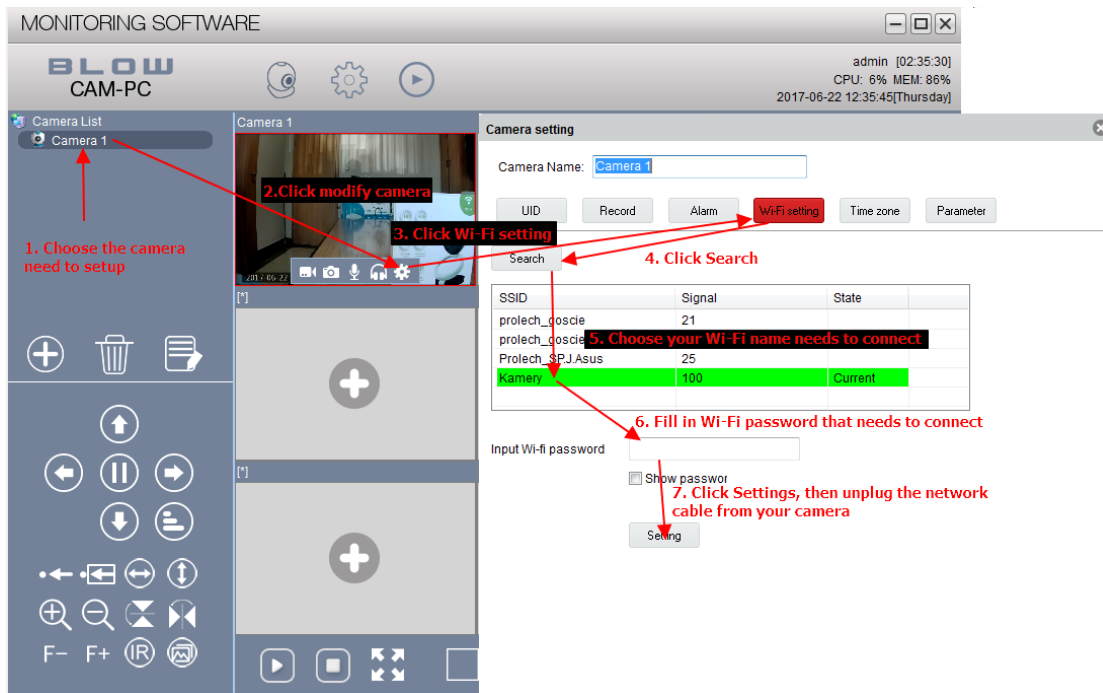
C:Alarm,shown as (Figure 5-5-1-6),Motion detection ,sensitivity,Alarm linkage mode can be selected

USER MANUAL SOFTWARE BLOW CAM-PC



(Figure 5-5-1-6)

D: Wi-Fi setting as shown (Figure 5-5-1-7)

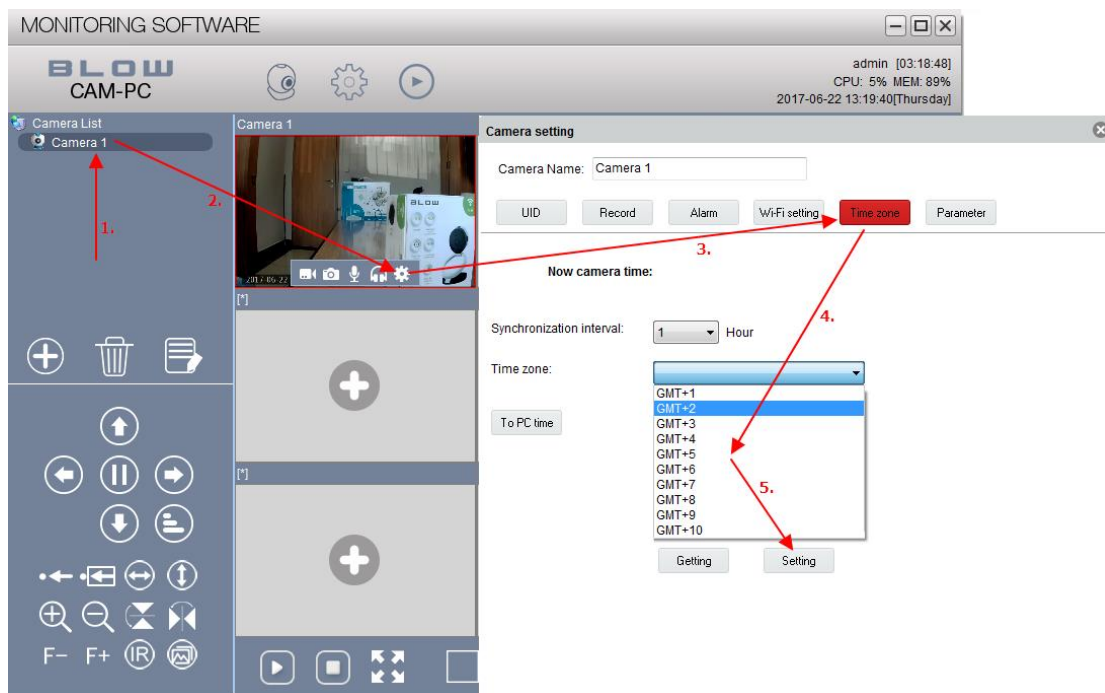


(Figure 5-5-1-7)

Click "Search", select the found wireless network, enter the password then click setting and unplug the network cable to connect.

E: Time zoom, as shown (Figure 5-5-1-8)

USER MANUAL SOFTWARE BLOW CAM-PC

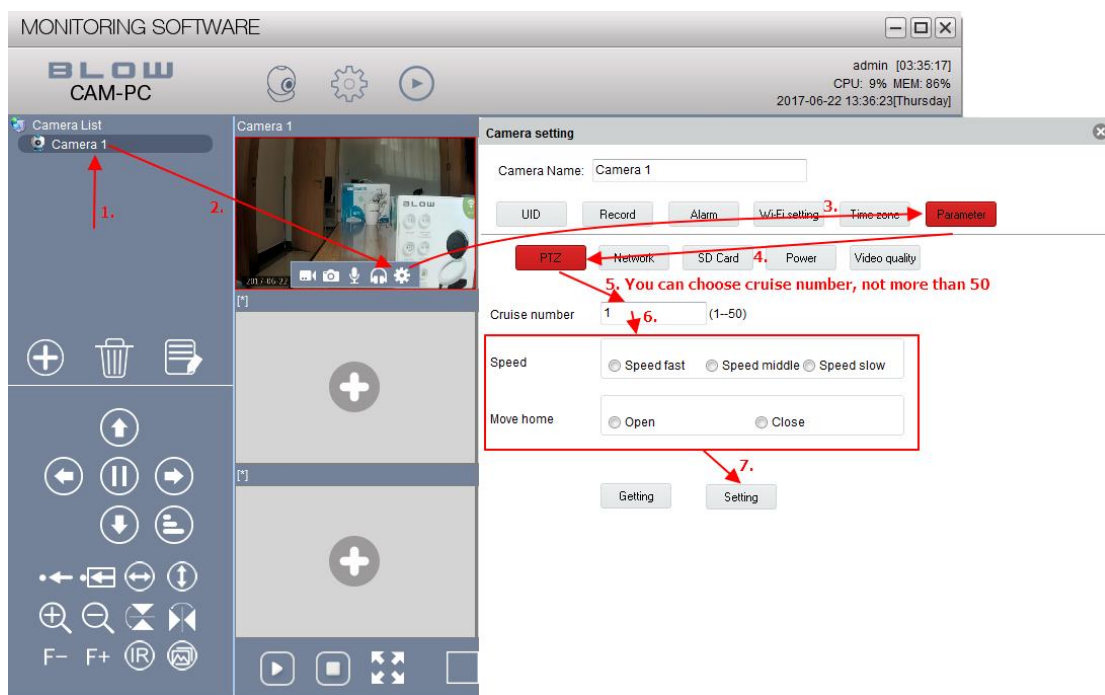


(Figure 5-5-1-8)

Synchronize the time setting, select the corresponding time zone, and synchronize the computer time.

F: Parameter

(1) PTZ, as shown (Figure 5-5-1-9)

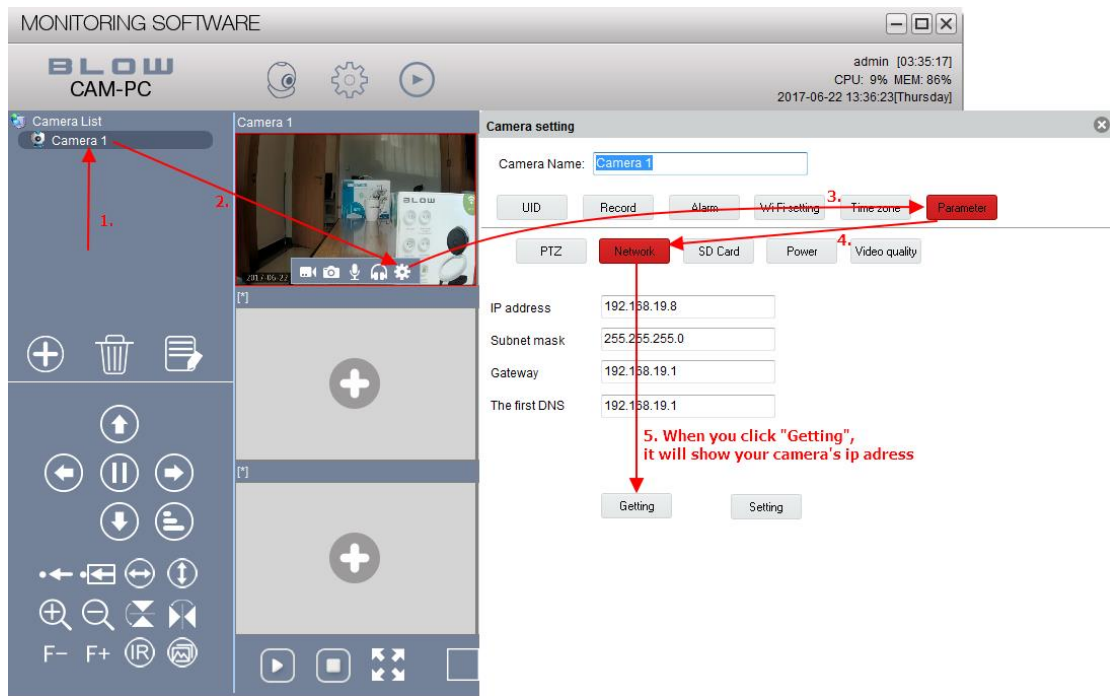


(Figure 5-5-1-9)

Cruise number, speed, move home can be selected

(2) Network as shown (Figure 5-5-1-10)

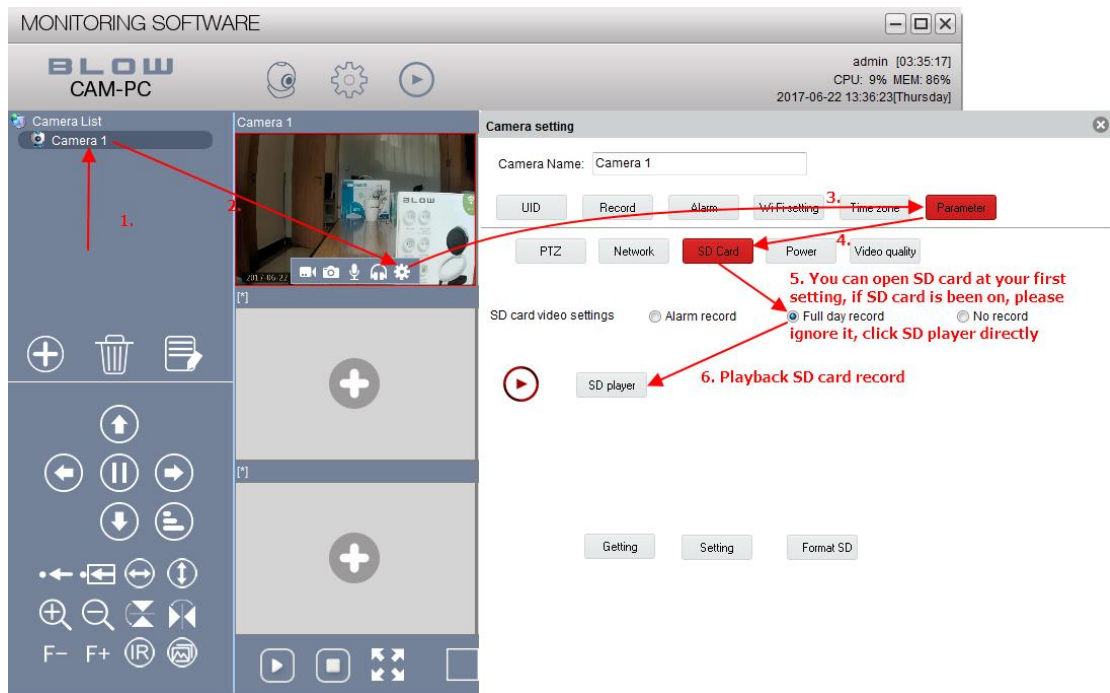
USER MANUAL SOFTWARE BLOW CAM-PC



(Figure 5-5-1-10)

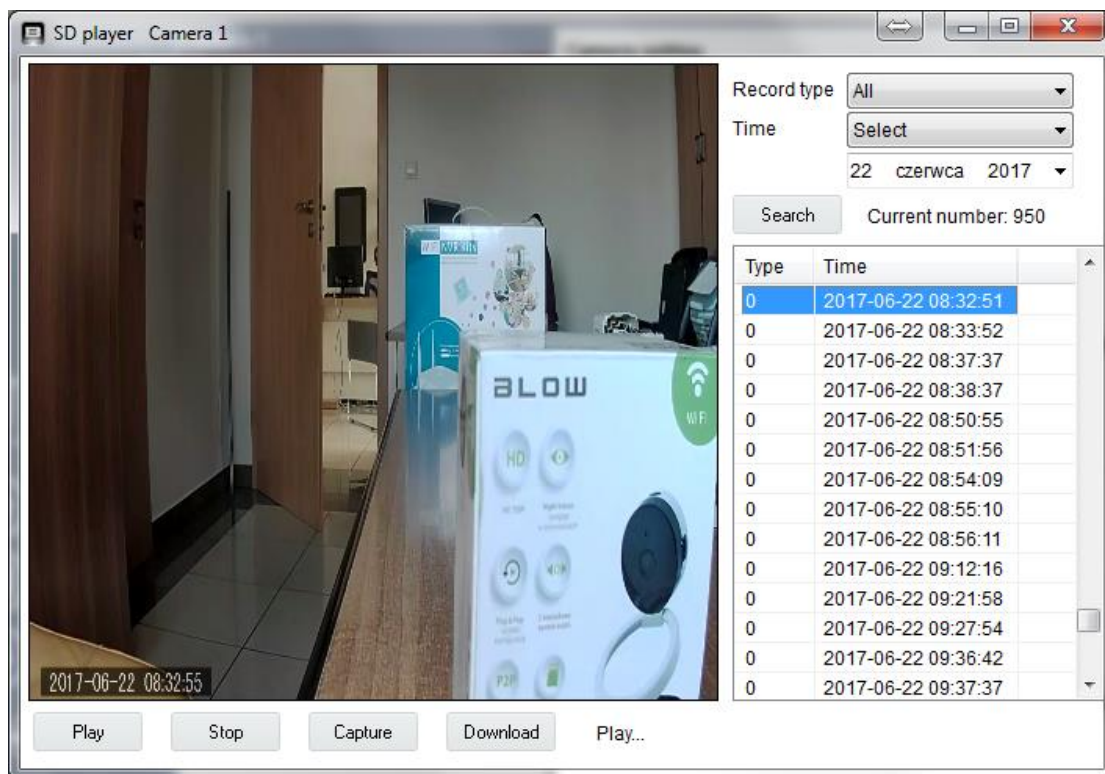
IP address settings IP

(3) SD Card as shown (Figure 5-5-1-11)



(Figure 5-5-1-11)

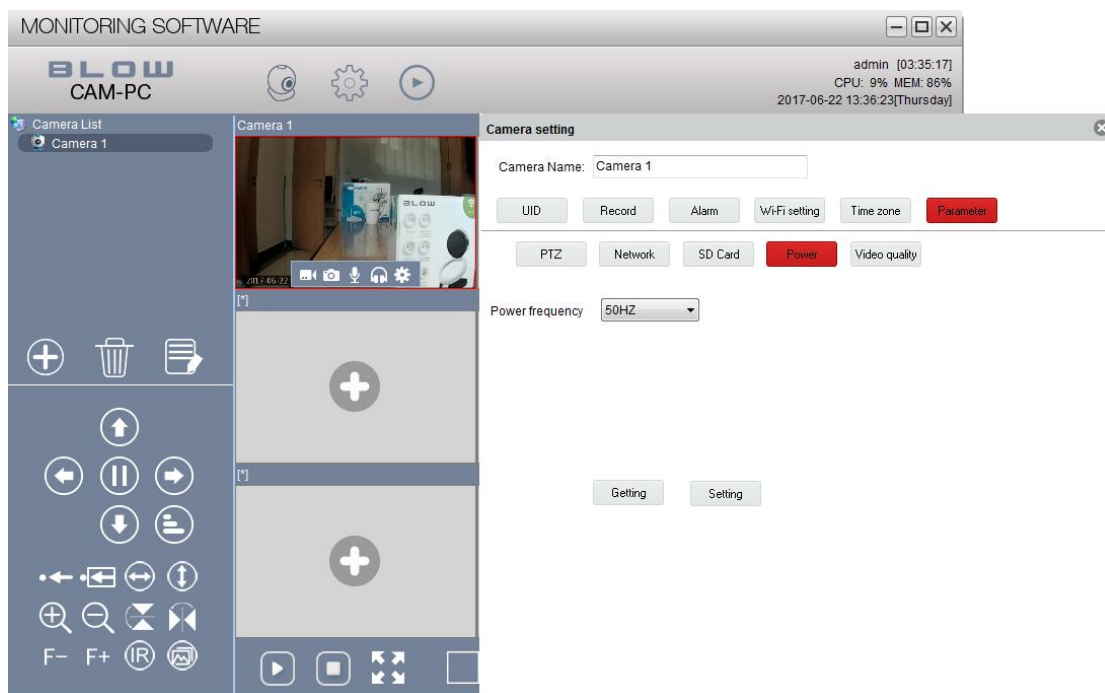
SD card video settings,SD player playback the SD card record,as shown (Figure 5-5-1-12) ,Format SD card.



(Figure 5-5-1-12)

SD card video playback can be based on video type or time to find the video, select the video file to play, and can capture and download the video;

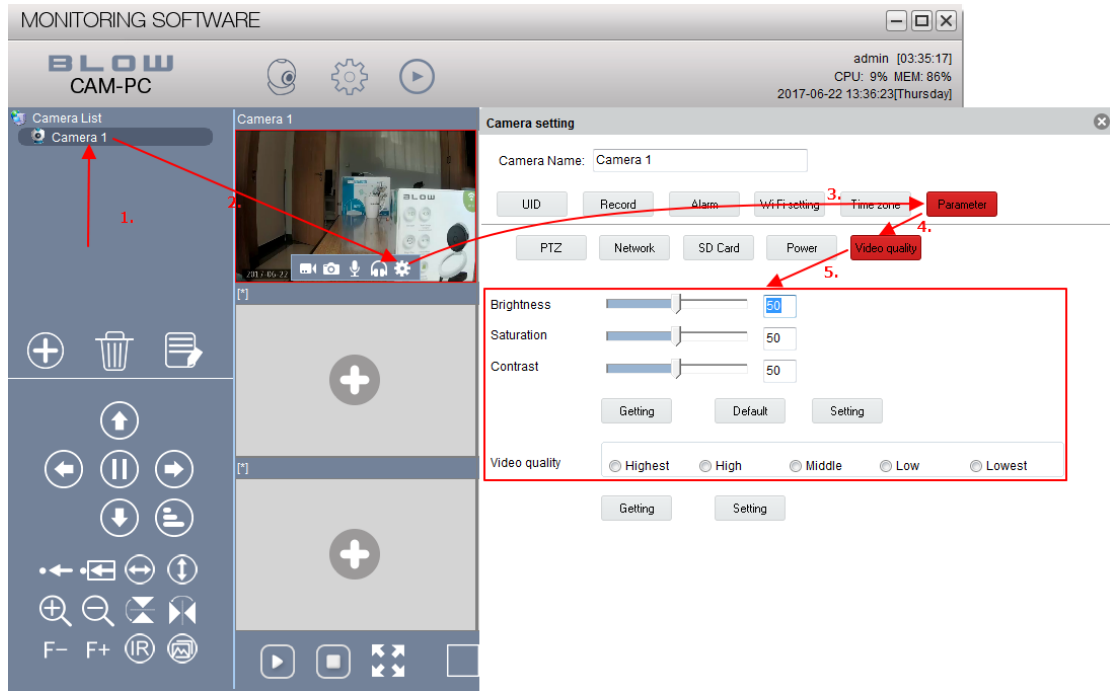
(4) Power as shown (Figure 5-5-1-13)



(Figure 5-5-1-13)

The power frequency can be selected, default is 50HZ;

(5) Video quality as shown (Figure 5-5-1-14)



(Figure 5-5-1-14)

the image will be clearer by adjusting the brightness, saturation, contrast, video quality

5.6 Control adjustment and image management

PTZ: In the lower left corner of the main interface, You can control the PTZ camera by clicking on the "aperture", "focus", "zoom" to adjust the camera screen and control the direction



(Figure 5-6-1)



: Call Preset



: Cruising direction




: Zoom adjustment



: Mirror image


F- F+ : Focus adjustment


IR  : Infrared, picture quality adjustment


1. Screen management: At the bottom of the preview page, you can choose the number of screen divisions, currently split up to 36 ;




(Figure 5-6-1-1)

 : Click this button to preview the cameras that have been added online

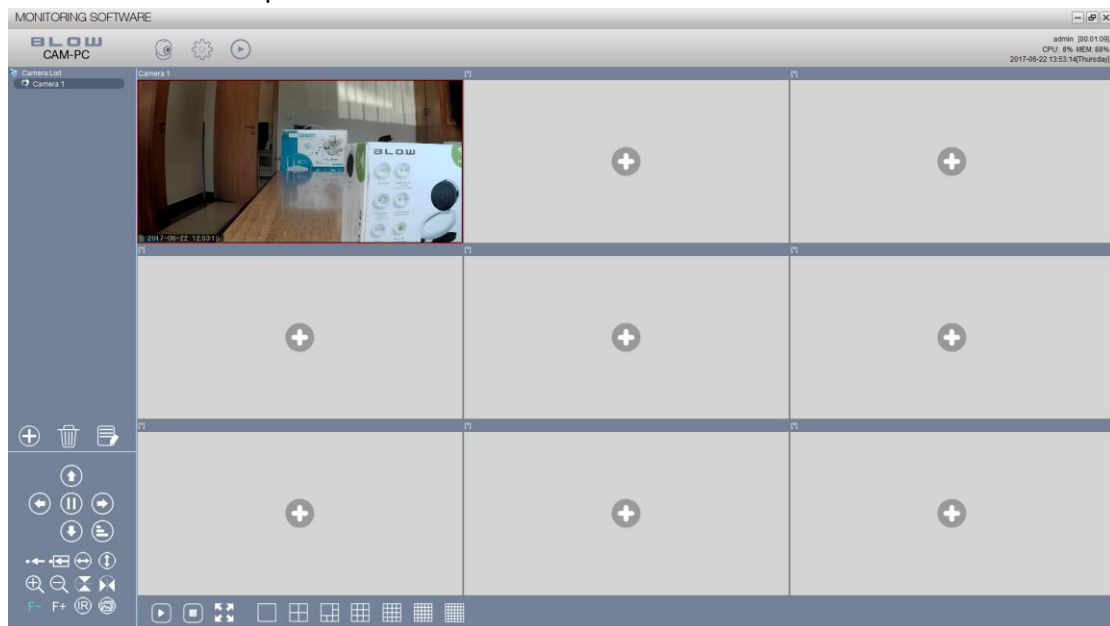
 : Close all the screens that are being previewed

 : full screen.

 : Click on a different number of divisions, and the screen will be displayed with the appropriate number of divisions (currently split up to 36)

5.7 Preview interface

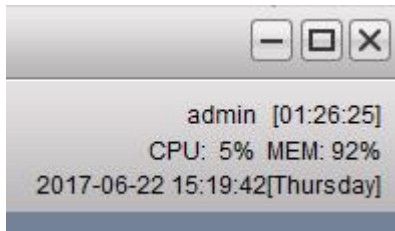
Preview interface is mainly required to display real-time preview of the screen, do the shortcut bar on the operation



(Figure 5-7-1)

5.8 Basic Information


The main information column shows the CPU, memory usage, date, login user name, software running time (Figure 5-8-1)



(Figure 5-8-1)

Maximize: Click , Maximize window;

Minimize: Click , Minimize window;

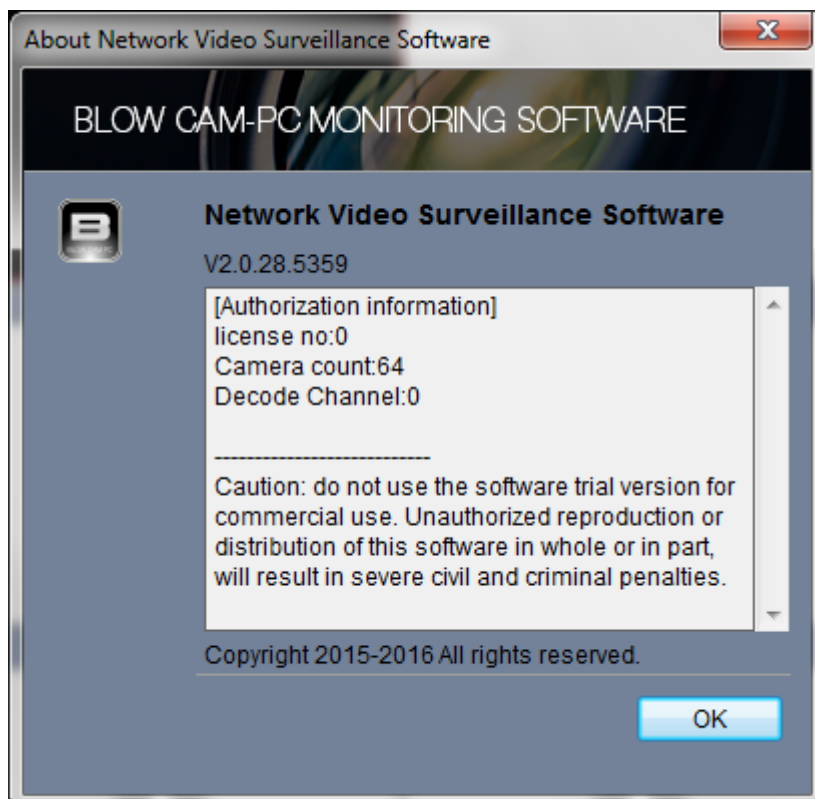
Close: Click , Close the CMS.

5.9 About Network Video Surveillance Software

Click on the top of the system function bar on the main interface to display the About System window (Figure 5-9-2). You can see the system version, authorization information, etc. (for example, V2.0.28.5339, Authorization number, authorized number of cameras, etc.)



(Figure 5-9-1)



(Figure 5-9-2)

Statement:

This manual does not have any form of warranty, representation or other implication. The equipment manufacturer and its employees will not be held responsible for any direct or indirect data loss, loss of profit, or termination of business due to any information contained in this operating manual or the equipment referred to in these operating instructions.

In addition, the equipment specifications and information mentioned in this manual are only for reference and the contents are subject to change without notice.

All parts of this operating manual, including software and hardware, if there is any error, the equipment manufacturer is not obliged to bear any responsibility for it. The equipment manufacturer reserves the right to make changes to the appearance of the equipment, system performance and specifications, and methods of use. Prohibition of non-professionals operating software! It is prohibited to copy or distribute this software in whole or in part without authorization. The supplier is not responsible for any damage or loss of data resulting therefrom. If in doubt, contact your supplier.

Due to the need for software updates, all software screenshots are based on the actual software interface.

All the screenshots and text mentioned in the equipment IP address information for our company testing, has nothing to do with the practical application.

Version declaration:

- ◆ It is prohibited to use the trial version of this software for commercial purposes.
- ◆ Unauthorized copying or distribution of some or all of the Software is subject to severe civil and criminal sanctions and is subject to the maximum possible prosecution to the extent permitted by law.